

**NWBC 2015**  
6th Nordic Wood Biorefinery Conference  
20 – 22 October, 2015  
Helsinki, Finland

# Conference Guide

Sponsored by



**kemira**



## Conference Guide

Welcome from the Conference Chairman .....	3
General Information .....	4
Conference venue.....	4
Location and driving information .....	4
Registration desk .....	4
Conference room.....	4
Dress code.....	4
Poster sessions.....	4
Uploading presentations .....	4
Social functions.....	5
Daily lunches and coffee breaks .....	5
WiFi .....	6
Helsinki Map and Hotels.....	7
Walking routes to the social event.....	7
Floor Plan .....	8
NWBC 2015 – Skeleton programme.....	9
Programme Advisory Committee .....	10
Organising Committee of NWBC 2015 .....	10
Sponsored by .....	10

## Welcome from the Conference Chairman

The international event, Nordic Wood Biorefinery Conference (NWBC), is the leading meeting place for wood biorefinery professionals.

The programme of the 6th NWBC consists of more than 40 oral and 40 poster presentations, to give a comprehensive overview of the latest industrial and academic developments in wood-based biorefining to chemicals and materials.

The oral programme is divided into three full days of interesting sessions with a balanced mix of academic and industrial experiences at all levels of development.

The Conference Guide has been put together to provide the most vital day-to-day instructions for the NWBC 2015 activities.

The organisers of the NWBC 2015 wish to thank everyone involved in the preparation process of this conference; the programme advisory committee members and session chairs for their contribution in planning and setting up the conference agenda.

We are pleased to have you here. Welcome to Helsinki and NWBC 2015!



Eemeli Hytönen  
Chairman of the NWBC 2015 Organising Committee

## General Information

### Conference venue

Scandic Marina Congress Center, Europaea  
Katajanokanlaituri 6  
00160 Helsinki, Finland

### Location and driving information

#### Parking

Our onsite car park has 100 spaces for outdoor parking and the hotel next to us has extra 40 spaces in the garage. Outdoor parking is located both right next to Marina Congress Center and in front of the hotel on the other side of the road. Outdoor parking costs EUR 3/hour or EUR 15/day per day and indoor parking is EUR 5/hour or EUR 25/day.

#### from Helsinki railway station

##### By tram

Walk across to Stockmann department store and take tram no 4. Get off at the 4th stop (Kauppiaankatu). Walk a bit backwards and turn left to Kauppiaankatu. Walk one block down towards the sea and Marina Congress Center and Scandic Grand Marina hotel are on your left hand side.

##### By car

Follow signs towards Katajanokka. Head east along Kaivokatu to Kaisaniemenkatu and turn left in the roundabout (1st exit) to Unioninkatu. Turn left to Aleksanterinkatu and right to Mariankatu and then left towards Katajanokka. Continue along Kanavakatu until you see Marina Congress Center.

#### from Helsinki-Vantaa Airport

##### By bus

From Helsinki-Vantaa Airport take buses 615 or Finnair City Bus to downtown Helsinki (Helsinki railway station is the final stop). From Helsinki railway station walk across to Stockmann department store and take tram no 4. Get off at the 4th stop (Kauppiaankatu). Walk a bit backwards and turn left to Kauppiaankatu. Walk one block down towards the sea and Marina Congress Center and Scandic Grand Marina hotel are on your left hand side.

##### By train

From Helsinki-Vantaa Airport take train I or P. Helsinki railway station is the final stop. Both trains (I and P) run to Helsinki railway station, train I is few minutes faster. From Helsinki railway station walk

across to Stockmann department store and take tram no 4. Get off at the 4th stop (Kauppiaankatu). Walk a bit backwards and turn left to Kauppiaankatu. Walk one block down towards the sea and Marina Congress Center and Scandic Grand Marina hotel are on your left hand side.

##### By car

From Helsinki-Vantaa Airport take highway 45 towards Helsinki downtown. Follow signs marked Centrum. From Pohjoisranta street, follow signs to Katajanokka. You will cross a small bridge and see Marina Congress Center and Scandic Grand Marina hotel.

### Registration desk

The NWBC 2015 registration desk is located on the 1<sup>st</sup> floor of Scandic Marina Congress Center near the conference room Europaea.

#### The desk is open

Tuesday, October 20	8:00–17:15
Wednesday, October 21	7:30–17:40
Thursday, October 22	8:00–16:00

### Conference room

The NWBC 2015 conference room is Europaea hall on the 1<sup>st</sup> floor of Scandic Marina Congress Center.

### Dress code

The dress code for the NWBC 2015 sessions is Business Casual.

### Poster sessions

The posters are located in the foyer area next to Nautica, which is adjoining room to the Europaea hall. The poster can be hung to the poster stand in the morning by the start of the poster session and the Author is to remove the poster after the closing of the conference. The staff will remove posters that remain on the poster stands. The Authors are kindly reminded to be at their poster during the assigned poster session.

### Uploading presentations

The technical equipment includes a projector and a computer compatible with Windows 8 and Office 2010.

We kindly ask you to send your **presentation materials by 14<sup>th</sup> of October** to [NWBC2015@vtt.fi](mailto:NWBC2015@vtt.fi) in PowerPoint (or PDF) format.

Presentation computer is located at the front of Europaea and technician helps the speaker to transfer his or her presentation into computer. Please note that the uploading is possible only during the breaks.

Speakers are kindly requested to respect the allotted time to guarantee a smooth running of the sessions.

Introduce yourself to the chairperson well in advance of the session.

## Social functions

### Conference Reception at VTT

Date Monday, October 19, 2015  
Time 18.00 - 21.00  
Venue VTT, Tietotie 3, Otaniemi, Espoo

Enjoy appetizers and beverages including VTT's own beer whilst networking with presenters and other conference delegates.

In addition to networking there will be an opportunity to join guided tours to the pilot facilities of VTT located in nearby buildings.

Reception is included in the conference fee, please register via link on the conference webpage no later than 18th October.

### Welcome Reception hosted by City of Helsinki

Date Tuesday, October 20, 2015  
Time 19:00  
Venue Helsinki City Hall, Pohjoisesplanadi 11–13, Helsinki  
Dress Smart casual  
Please take the Reception invitation with you.

### Conference Dinner

Date Wednesday, October 21, 2015  
Time 19:00  
Venue Scandic Marina Congress Center, Fennia I, 2<sup>nd</sup> floor  
Dress Smart casual or come as you are  
Please take the Dinner invitation with you.

If you have informed us any special dietary requirements, we will do our utmost to accommodate any special requirements you may have.

### **Menu**

*Fish plate: cold-smoked salmon, lavaret tartare, marinated herring, lavaret roe and rye potato cake L*

*Perlage Pinot Grigio delle Venezie Organic*

\*\*\*

*Rare roasted reindeer, red wine sauce with cepes, baked root vegetables L, G*

*Albet i Noya Tempranillo Classic Organic*

\*\*\*

*Blueberry cake, crème caramel and vanilla quark*

*Coffee with Avec*

\*\*\*

Entertainment by Acoustic Dixie.

### Daily lunches and coffee breaks

A buffet lunch is served daily in the Europaea foyer area near the conference room. The coffee breaks take place also in the Europaea foyer area on the 1st floor.

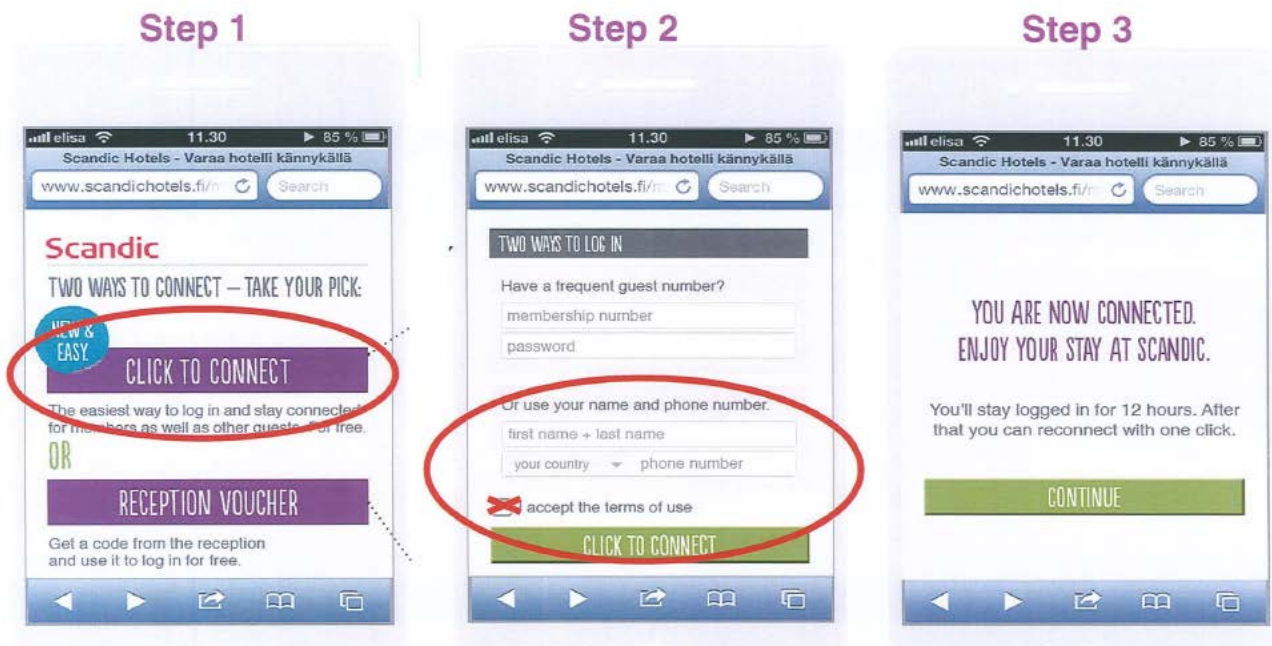
If you have informed us any special dietary requirements, we will do our utmost to accommodate any special requirements you may have.

## WiFi

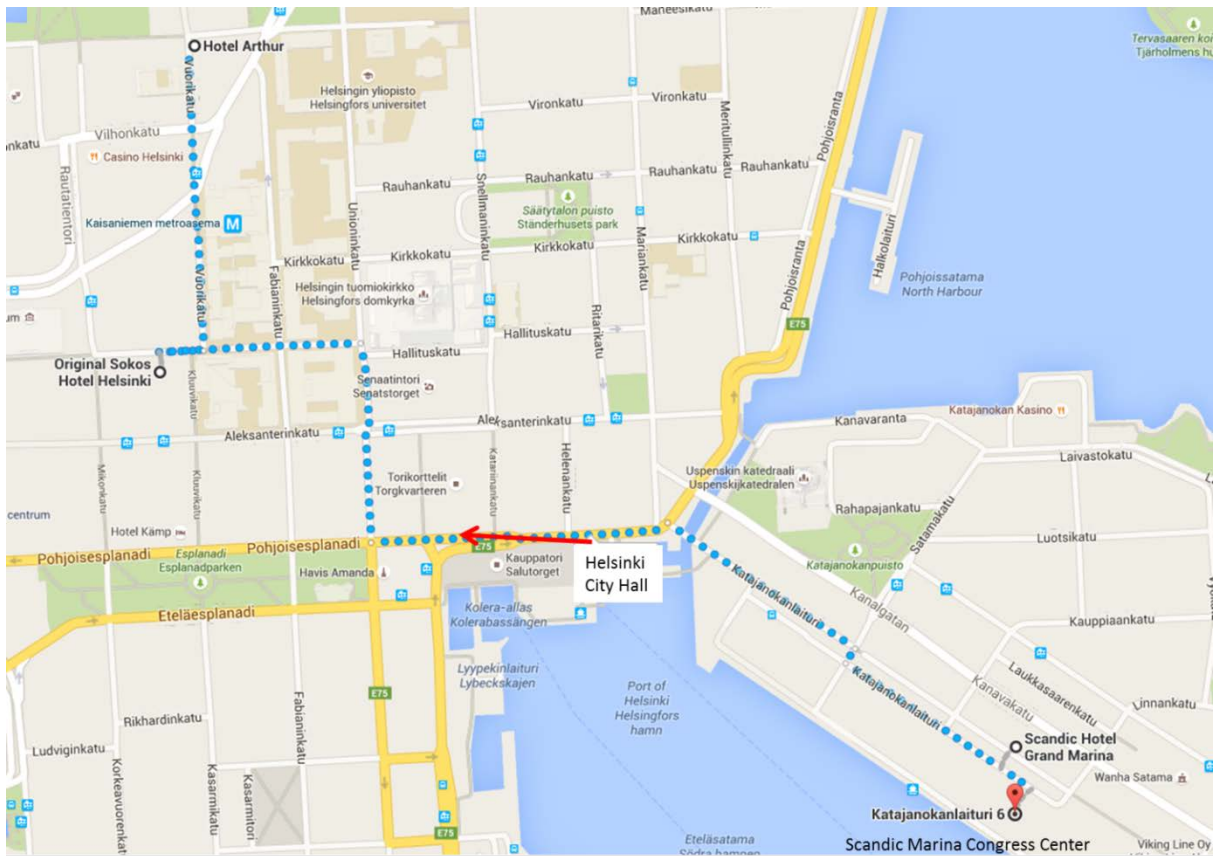
There is a free WiFi network available.

WiFi network (SSID): scandic\_easy

You can log in with your name and phone number.



## Helsinki Map and Hotels



### Walking routes to the social event

Welcome Reception hosted by City of Helsinki

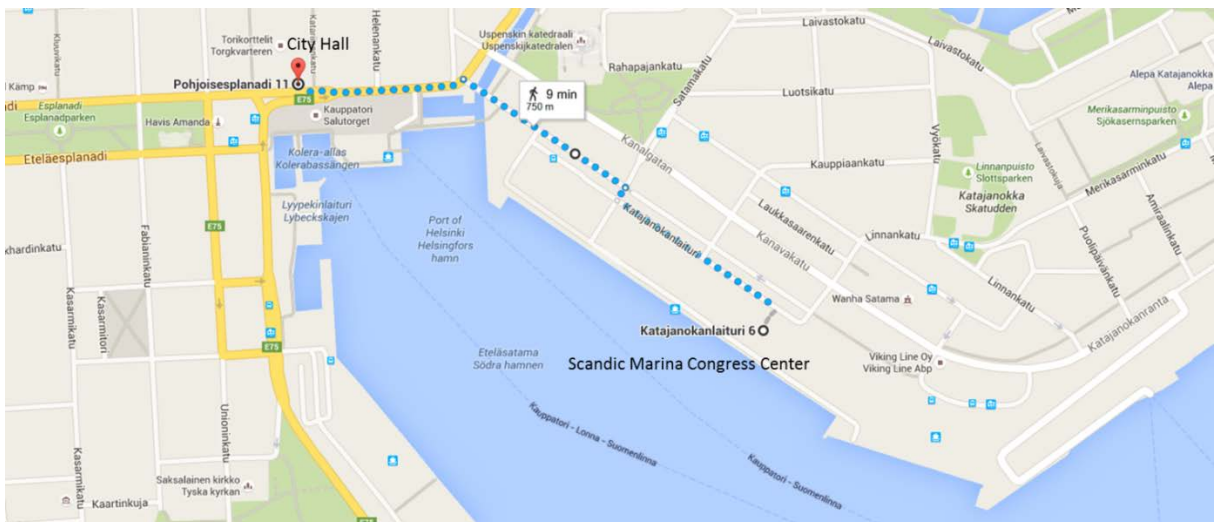
Date: Tuesday, October 20, 2015

Time: 19:00

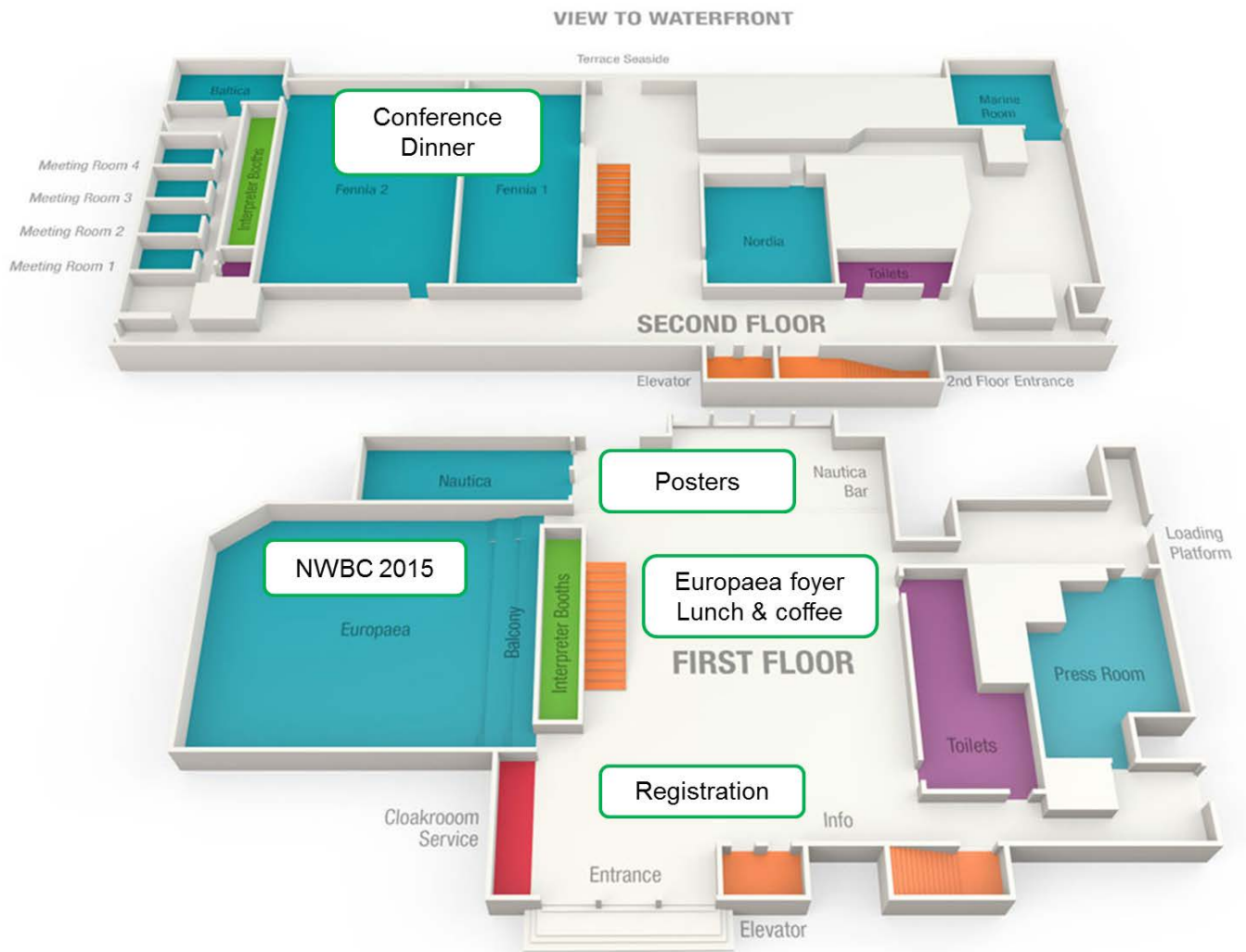
Venue: Helsinki City Hall, Pohjoisesplanadi 11–13, Helsinki

Dress: Smart casual

Please take the Reception invitation with you.



## Floor Plan





## NWBC 2015 – Skeleton programme

### Tuesday, October 20, 2015

- 08:00–09:00 Registration and coffee
- 09:00–09:30 Opening
- 09:30–11:00 **Session 1 – Panel Discussion – industry views** (Moderator: John Kettle)
- 11:00–11.30 Poster viewing
- 11:30–12:30 Lunch Break & Poster viewing continuing
- 12:30–14:15 **Session 2 – Policy** (Session Chair: Tuomas Mustonen)
- 14:15–14:45 Coffee Break & Poster viewing
- 14:45–15:35 **Session 3 – National and international activities** (Session Chair: Niklas Garoff)
- 15:35–17:15 **Session 4 – Programmes and Projects to follow in the future** (Session Chair: Niklas von Weymarn)
- 19:00–20:30 Welcome Reception, Hosted by the City of Helsinki, City Hall, Pohjoisesplanadi 11–13  
Welcoming address by Ms Anni Sinnemäki, Deputy Mayor of the City of Helsinki

### Wednesday, October 21, 2015

- 07:30–08:00 Registration
- 08:00–09:45 **Session 5 – Assessments and markets** (Session Chair: Katja Salmenkivi)
- 09:45–10:15 Coffee Break & Poster viewing
- 10:15–12:00 **Session 6 – Pre-treatment/Fractionation** (Session Chair: Matti Siika-aho)
- 12:00–13:00 Lunch Break & Poster viewing
- 13:00–14:15 **Session 7 – Upgrading 1** (Session Chair: Juha Lehtonen)
- 14:15–14:45 Coffee Break & Poster viewing
- 14:45–16:25 **Session 8 – Upgrading 2** (Session Chair: Philip Goodier)
- 16:25–17:40 **Session 9 – DES & IL** (Session Chair: Ivo Aroso)
- 19:00–22:00 **Conference Dinner & Entertainment**  
Scandic Marina Congress Center, Fennia I, 2nd floor

### Thursday, October 22, 2015

- 08:00–08:30 Registration
- 08:30–09:20 **Session 10 – Textiles** (Session Chair: Ali Harlin)
- 09:20–09:45 Coffee Break & Poster viewing
- 09:45–11:30 **Session 11 – Lignin** (Session Chair: Peter Axegård)
- 11:30–12:30 Lunch Break & Poster viewing
- 12:30–14:15 **Session 12 – Thermochemical biorefinery & products** (Session Chair: Anja Oasmaa)
- 14:15–14:45 Coffee and Poster viewing
- 14:45–15:35 **Session 13 – Biorefinery products – carbon fibres** (Session Chair: Darren Baker)
- 15:35–15:45 **Session 14 – Closing session**

## Programme Advisory Committee

Dr. Peter Axegård

Dr. Klaus Niemelä

Prof. Adriaan van Heiningen

Prof. Gil Garnier

Dr. Elspeth MacRae

Dr. Tom Browne

Prof. Orlando Rojas

Chair Professor Kristiina Oksman

M.Sc. Mikael Hannus

D.Sc. Niklas von Weymarn

M.Sc. Kari Saari

Innventia

VTT Technical Research Centre of Finland Ltd

University of Maine

Monash University

Scion

FPIInnovations

Aalto University NC State

Luleå University of Technology FiDiPro Professor  
University of Oulu

Stora Enso

Metsä Fibre

Kemira

## Organising Committee of NWBC 2015

Eemeli Hytönen

John Kettle

Satu Koskela

Leena Tuuro

Peter Axegård

Birgit Backlund

VTT Technical Research Centre of Finland Ltd

VTT Technical Research Centre of Finland Ltd

VTT Technical Research Centre of Finland Ltd

VTT Technical Research Centre of Finland Ltd

Innventia

Innventia

## Sponsored by

